

## SC Duplex Adapter Specification

### Features

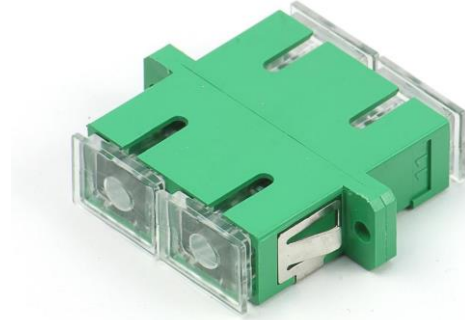
Low Insertion Loss

Compliant with IEC

High Precision of Mechanical Dimensions

RoHS Compliance

Available Ceramic Sleeves



### Application

CATV System

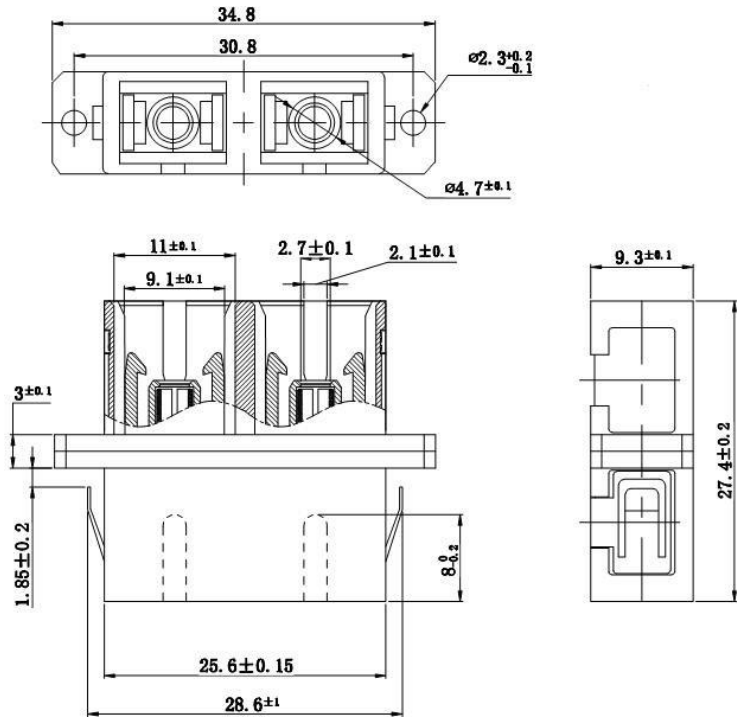
Local Area Networks

Telecommunication Networks

FTTH and FTTx

Testing Equipment

Fiber LAN



### Parameter

Product	SC Adapter	
Mode	S.M	M.M
Insertion Loss	$\leq 0.2\text{dB}$	$\leq 0.2\text{dB}$
Mating Durability(500 timer)	Additional Loss $\leq 0.1\text{dB}$	
Temperature Stability( $-40^{\circ}\text{C} \sim 85^{\circ}\text{C}$ )	Additional Loss $\leq 0.2\text{dB}$	
Operating Temperature	$-20^{\circ}\text{C} \sim +75^{\circ}\text{C}$	
Storage Temperature	$-40^{\circ}\text{C} \sim +85^{\circ}\text{C}$	