



FIBER OPTIC ADAPTERS



Telekom & Elektrik & Elektronik

SC/APC to SC/APC Single mode Simplex & Duplex Adapter

Description

Fiber optic adapter, sometimes also called coupler, is a small device designed to terminate or link the fiber optic cables or fiber optic connectors between two fiber optic lines.

By linking two connectors precisely, fiber optic adapters allow the light sources to be transmitted at most and lower the loss as much as possible. At the same time, fiber optic adapters have the merits of low insertion loss, good interchangeability and reproducibility



Connecting a SC Duplex connector to a SC Duplex connector to extend the length of a cable run.



Features

- Low insertion and high return loss
- High Precision Alignment;
- Good Wearability;
- Good interchangeability;
- Good Temperature characteristic;
- Good repeatability.

FIBER OPTICAL U-LINK

www.fcttech.com

APPLICATIONS

- CATV
- Active device termination
- Telecommunication networks
- Metro networks
- Local Area Networks (LANs)
- Data processing networks
- Wide Area Networks (WANs)
- Test equipment
- Premise installations

Technical Specifications

Connector Type	SC-SC	Polish Type	APC
Fiber Counts	1 / 2 Cores	Fiber Mode	Singlemode
Insertion Loss	$\leq 0.2dB$	Durability	1000 times
Sleeve Material	Zirconia Ceramic	Body Material-Color	Polymer - Green
Flammability Rate	UL94-V0	Working Temperature	-25~70°C

PRODUCT	TURKSAT CODE	BRAND/MODEL
SC/APC SM SIMPLEX ADAPTER	TKS-FOM-33	FCF/T-SCASMSX.UL
SC/APC SM DUPLEX ADAPTER		FCF/T-SCASMDX.UL

LC/APC to LC/APC Single mode Simplex & Duplex Adapter

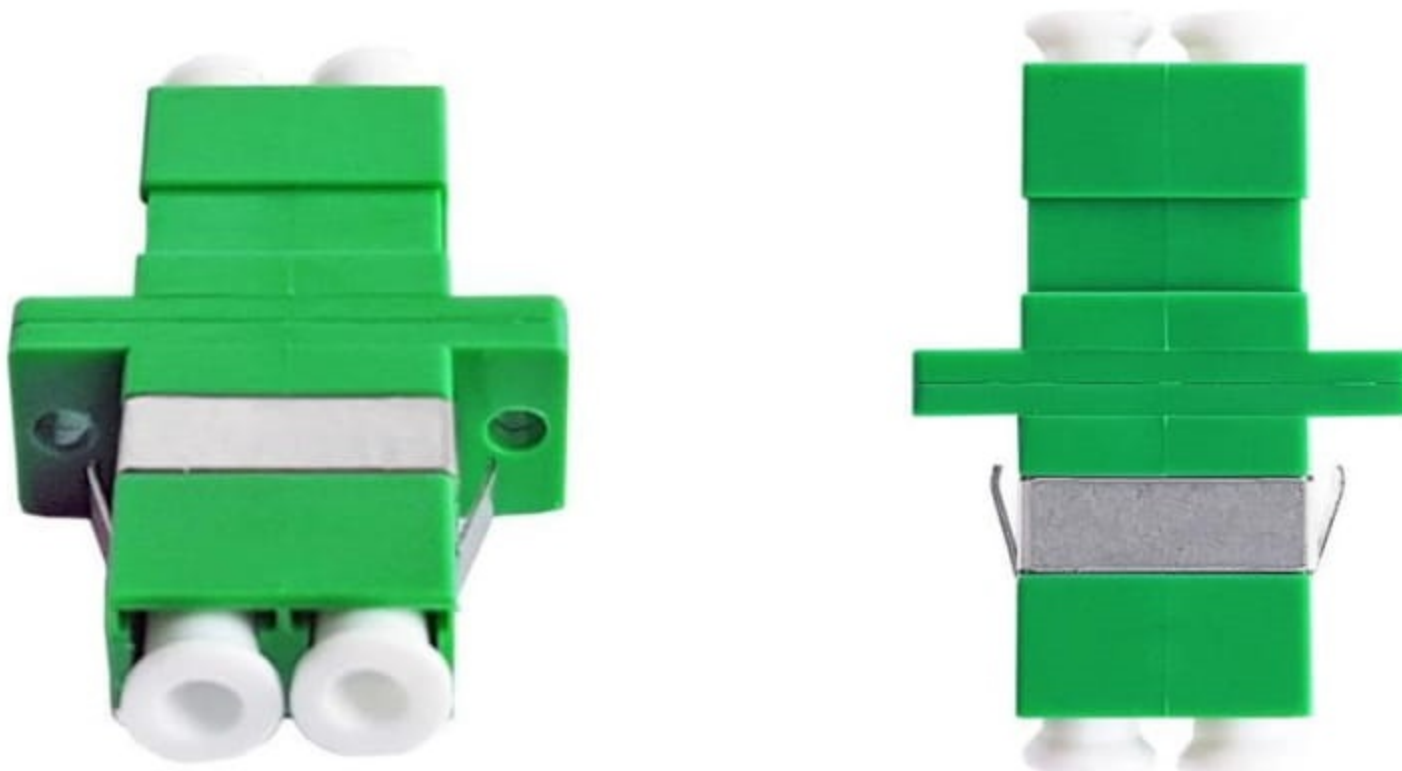
Description

Fiber optic adapter, sometimes also called coupler, is a small device designed to terminate or link the fiber optic cables or fiber optic connectors between two fiber optic lines.

By linking two connectors precisely, fiber optic adapters allow the light sources to be transmitted at most and lower the loss as much as possible. At the same time, fiber optic adapters have the merits of low insertion loss, good interchangeability and reproducibility



Connecting a LC Duplex connector to a LC Duplex connector to extend the length of a cable run.



Features

- Low insertion and high return loss
- High Precision Alignment;
- Good Wearability;
- Good interchangeability;
- Good Temperature characteristic;
- Good repeatability.

FIBER OPTICAL U-LINK

www.fcttech.com

APPLICATIONS

- CATV
- Active device termination
- Telecommunication networks
- Metro networks
- Local Area Networks (LANs)
- Data processing networks
- Wide Area Networks (WANs)
- Test equipment
- Premise installations

Technical Specifications

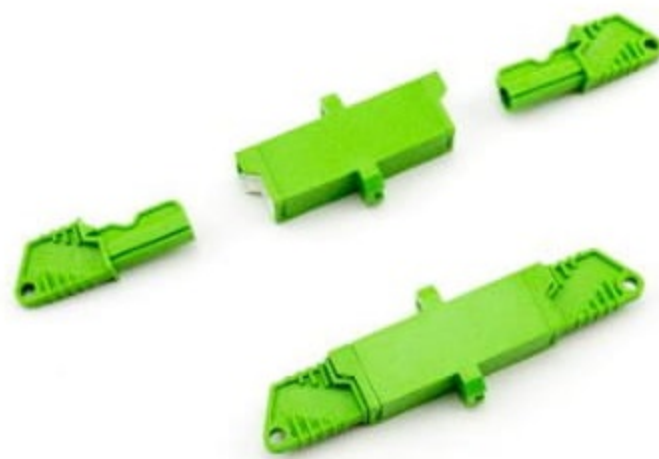
Connector Type	LC-LC	Polish Type	APC
Fiber Counts	1/2/4 Cores	Fiber Mode	Singlemode
Insertion Loss	$\leq 0.2dB$	Durability	1000 times
Sleeve Material	Zirconia Ceramic	Body Material-Color	Polymer - Green
Flammability Rate	UL94-V0	Working Temperature	-25~70°C

E2000/APC to E2000/APC Single mode Simplex Adapter

Description

Fiber optic adapter, sometimes also called coupler, is a small device designed to terminate or link the fiber optic cables or fiber optic connectors between two fiber optic lines.

By linking two connectors precisely, fiber optic adapters allow the light sources to be transmitted at most and lower the loss as much as possible. At the same time, fiber optic adapters have the merits of low insertion loss, good interchangeability and reproducibility



Connecting a E2000 Simplex connector to a E2000 Simplex connector to extend the length of a cable run.



Features

- Low insertion and high return loss
- High Precision Alignment;
- Good Wearability;
- Good interchangeability;
- Good Temperature characteristic;
- Good repeatability.

FIBER OPTICAL U-LINK

www.fcttech.com

APPLICATIONS

- CATV
- Active device termination
- Telecommunication networks
- Metro networks
- Local Area Networks (LANs)
- Data processing networks
- Wide Area Networks (WANs)
- Test equipment
- Premise installations

Technical Specifications

Connector Type	E2000-E2000	Polish Type	APC
Fiber Counts	1 Cores	Fiber Mode	Singlemode
Insertion Loss	≤0.2dB	Durability	1000 times
Sleeve Material	Zirconia Ceramic	Body Material-Color	Polymer - Green
Flammability Rate	UL94-V0	Working Temperature	-25~70°C