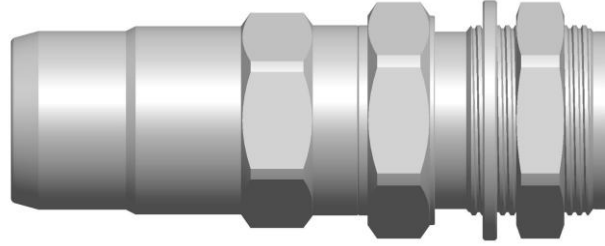


TÜRKSAT KODU : TKS-KON-01


Description: Hardline Connector D015 – 3.5/12 female for chassis mount.

TYPICAL SPECIFICATIONS DATA SHEET
Electrical

	Spec.	Standard
Frequency Range	5 MHz – 3000 MHz	
Impedance	75 Ω Nominal	
Return loss	≥ 30 dB	5 MHz – 1000 MHz IEC 61169-1, 9.2.1.4
Insertion loss	≤ 0.1 dB	5 MHz – 1000 MHz
Inner conductor Resistance	$\leq 0,5$ m Ω @ 1A DC	IEC 61169-1, 9.2.3
Amp Rating	≥ 15 A @ 60 V.	
Shielding	Minimum Class A+	EN 50117
Dielectric Strength	≥ 3 kV	IEC 61169-1, 9.2.6
Insulation Resistance	$\geq 29,99$ G Ω @ 500V DC	IEC 61169-1, 9.2.5
CPD	≤ -110 dBc	

Environmental

	Spec.	Standard
Temperature range Operating	-30°C to +75°C	
Temperature range Installation	-5°C to +50°C	
Sealing Test	IPX8 – 1 meter / 24 hours	IEC 60529
Corrosion Protection		ASTM B 117-94
Red Dye		ANSI/SCTE 60

Mechanical

	Spec.	Standard
Interface	3.5/12	IEC 61169-14
Pull Strength	≥ 100 kg	ANSI/SCTE 99

Material and Finish

	Spec.	Standard
Housing	NiSn (NITIN) plated Brass	ASTM B605
Inner conductor	NiSn (NITIN) plated Brass	ASTM B605
O´rings	EPDM	
Insulators	Polycarbonate / Polyethylene	

In order to continue to supply the best products, PPC reserves the right to change the products and specifications at any time without prior notice.