

# DOCSIS 3.1 ELITE SERIES

## Isolators

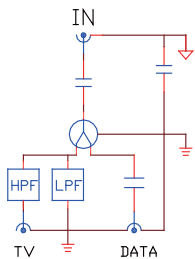
## Isolated Splitters + HPF + LPF

## GIS204H



- **TV Port:** Pass band 110-1218 MHz; **IN-Data:** 5-1218 MHz.
- **TV port** integrated with LPF at reverse band 5-85 MHz to reduce interference.
- Double isolators design for better voltage protection without grounding.
- Isolated connector is made of Nickel plated Brass, housing is Zinc-alloy die-cast with Nickel plating (2 $\mu$ m), back lid is glued and with PRESS-IN sealing technology for better weather- resistance.
- Inner conductor: Phosphorus Bronze with Nickel plating.
- F female ports meets IEC 61169-24 standard.
- All ports are with blocking capacitors for DC/HUM protection.
- Pull Force in use < 50kgs; Twist Torque in use < 50kgf.cm (5.1Nm).
- Surge Protection:1KV1.2/50us at Input <35V Rms(emf) at Ouput.

### Schematic

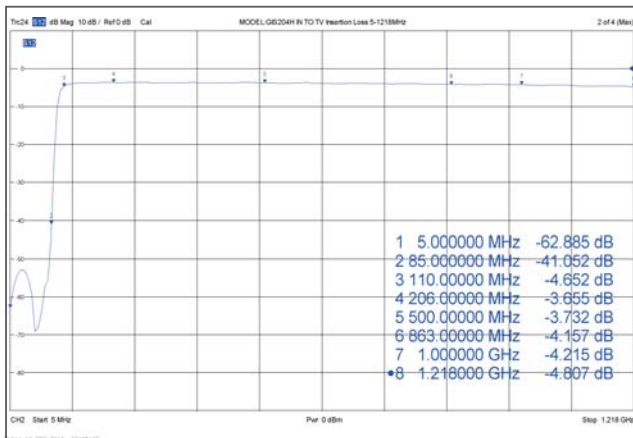


Taiwan Patent No. M438750  
China Patent No. ZL 2012 2 0216945.3  
EU Paten No. 2658137

### Specification

Model No.	GIS204H	Test (-dB)	
		FREQ (MHz)	QA
Rejection Loss (min)	5 - 85	36	58
Insertion Loss (IN-TV)(max)	110 - 205	5	3.8
	206 - 862	4.7	3.8
	863 - 1000	5	4.2
	1001 - 1218	5.3	4.5
Insertion Loss (IN-DATA)(max)	5 - 14	4.1	3.1
	15 - 85	4	3.1
	206 - 862	4.7	3.6
	863 - 1000	5	4.2
Isolation (TV-DATA)(min)	1001 - 1218	5.3	4.5
	5 - 85	50	77
	110 - 205	21	28
	206 - 862	20	27
Return Loss (IN)(min)	863 - 1000	20	25
	1001 - 1218	20	25
	5 - 14	20	28
	15 - 85	18	34
Return Loss (TV)(min)	206 - 1000	17	27
	1001 - 1218	16	26
	110 - 115	14	17
	116 - 205	17	28
Return Loss (DATA)(min)	206 - 1000	18	24
	1001 - 1218	16	22
	5 - 14	20	28
	15 - 85	20	28
	110 - 205	20	29
Operating Temperature: -20°C ~ +60 °C	206 - 1000	18	35
	1001 - 1218	18	31
	Impedance: 75 $\Omega$		

### GIS204H Insertion Loss Plot



Galvanic Isolation IEC 60728-11&10 Safety Requirement	Inner conductor (Input)	2120VDC	0.7 mA
	--> Inner conductor (Output)	230VAC	2.0 mA RMS
	Outer conductor (Input)	2120VDC	0.7 mA
	--> Outer conductor (Output)	230VAC	2.0 mA RMS
Screening Effectiveness (EN 50083/2)	5 - 300	85 dB	
	300 - 470	80 dB	
	470 - 950	75 dB	
	950 - 1218	55 dB	

### Packing Detail

DIMENSIONS: 47.6\*58.7\*20 mm  
N.W./PIECE: 68.5 g

G.W./INNER BOX: 1,100 g  
PCS\*INNER BOX: 16\*20

QTY/CTN: 320 pcs  
G.W./CTN: 23.5 kgs  
CTN SIZE: :34.5\*33\*20.5 cm