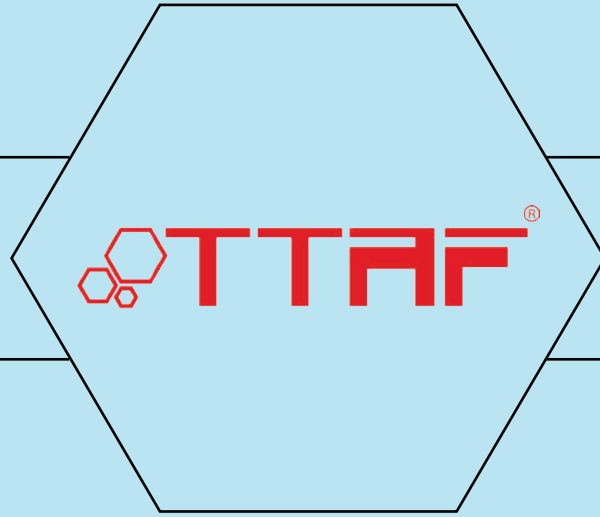




TÜRKSAT



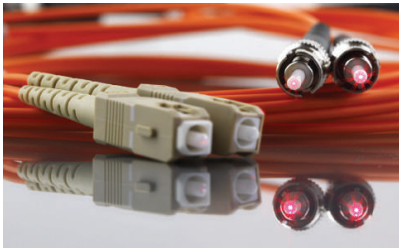
***FIBER OPTIK
PATCHCORD
&
PIGTAIL***

PATCHCORDS

FIBER OPTIK PATCHCORDS

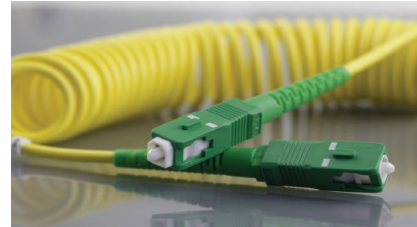
MM Multi Mode

- 50/125 OM2
- 50/125 OM3
- 50/125 OM3+/OM4
- Giga optimized for 1310nm transmission 1000Base-LX do 2000 m
- 62.5/125 OM1



SM Single Mode

- G652D Fiber with low water peak
- G655 NZDS fiber for CWDW and DWDM transmissions
- G656 NZDS fiber for CWDW and DWDM transmissions
- G657A Fiber with low bending radius for FTTH Networks, compatible with G652
- G657B Fiber with low bending radius for FTTH Networks



TECHNICAL DATA, PARAMETERS

Attenuation Of random taken connections dB Acc. IEC 61300-3-34	Attenuation Towards reference connector dB Acc. IEC 61300-3-4	Reflection Atten. Of reflectance dB Acc. IEC61300-3-6
Connectors SM: ST, SC, FC, LC, E2000, MU, DIN		
IL conn.-conn.97%≤0,6 dB Average ≤ 0,20 dB	IL max.≤0,30 dB	RL PC > 45 RL UPC >50
Connectors SM: MTRJ		
IL conn.-conn.95%≤0,6 dB Average ≤ 0,30 dB	IL max.≤0,75 dB	RL PC > 35
Connectors SM MT: MTP, MPO		
IL conn.-conn.97%≤0,70 dB Average ≤ 0,35 dB		RL PC > 55
Connectors SM APC: SC/APC, FC/APC, LC/APC, E2000/APC, MU/APC, DIN/APC		
IL conn.-conn.97%≤0,45 dB Average ≤ 0,20 dB	IL max.≤0,30 dB	RL APC > 65
Connectors MM: ST, SC, FC, LC, E2000, MU		
IL conn.-conn.97%≤0,70 dB Average ≤ 0,35 dB		RL PC > 30
Connectors MM: MTRJ		
IL conn.-conn.97%≤0,75 dB Average ≤ 0,50 dB		RL PC > 26
Connectors MM MT: MTP, MTPO		
IL conn.-conn.97%≤ 1 dB Average ≤ 0,50 dB		RL PC > 26

TECHNICAL DATA, PARAMETERS

Attenuation of random taken connections dB Acc. IEC 61300-3-34	Attenuation Towards reference connector dB Acc. IEC 61300-3-4	Reflection Atten. Of reflectance dB Acc. IEC61300-3-6
Connectors SM: ST, SC, FC, LC, E2000, MU, DIN		
IL conn.-conn.97%≤0,25 dB Average ≤ 0,12 dB	IL max.≤0,35 dB	RL UPC >50
Connectors SM APC: SC/APC, FC/APC, LC/APC, E2000/APC, MU/APC, DIN/APC		
IL conn.-conn.97%≤0,25 dB Average ≤ 0,12 dB	IL max.≤0,35 dB	RL APC > 65

PATCHCORDS

FIBER OPTIK PATCHCORDS

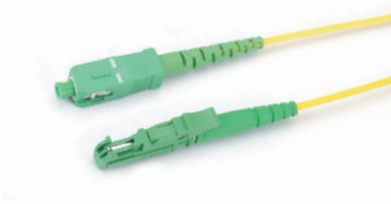
9/125 SINGLE MODE SIMPLEX PATCHCORDS

UL 94
V-0Low
Ins.
lossHigh
qualityLS
ZH**SC/APC-SC/APC 9/125 SM SX L:0,25**Turksat Code / TTAF Confirmation Code
TKS-FOM -53TTAF Code
FO-05224AASX2000,25**SC/APC-SC/APC 9/125 SM SX L:0,50**Turksat Code / TTAF Confirmation Code
TKS-FOM -54TTAF Code
FO-05224AASX2000,50**SC/APC-SC/APC 9/125 SM SX L:1**Turksat Code / TTAF Confirmation Code
TKS-FOM -50TTAF Code
FO-05224AASX20001**SC/APC-SC/APC 9/125 SM SX L:2**Turksat Code / TTAF Confirmation Code
TKS-FOM -55TTAF Code
FO-05224AASX20002**SC/APC-SC/APC 9/125 SM SX L:3**Turksat Code / TTAF Confirmation Code
TKS-FOM -09TTAF Code
FO-05224AASX20003**SC/APC-SC/APC 9/125 SM SX L:5**Turksat Code / TTAF Confirmation Code
TKS-FOM -10TTAF Code
FO-05224AASX20005**SC/APC-SC/APC 9/125 SM SX L:10**Turksat Code / TTAF Confirmation Code
TKS-FOM -11TTAF Code
FO-05224AASX20010

PATCHCORDS

FIBER OPTIC PATCHCORDS

9/125 SINGLE MODE SIMPLEX PATCHCORDS

UL 94
V-0Low
Ins.
lossHigh
qualityLS
ZH

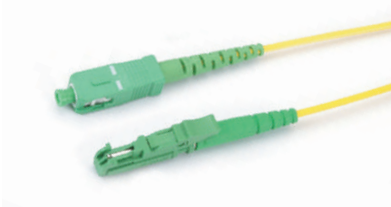
SC/APC-E2000/APC 9/125 SM SX L:1

Turksat Code / TTAF Confirmation Code

TKS-FOM -31

TTAF Code

FO-05274AASX20001



SC/APC-E2000/APC 9/125 SM SX L:2

Turksat Code / TTAF Confirmation Code

TKS-FOM -12

TTAF Code

FO-05274AASX20002



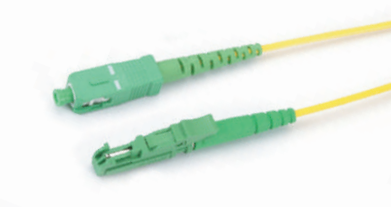
SC/APC-E2000/APC 9/125 SM SX L:3

Turksat Code / TTAF Confirmation Code

TKS-FOM -12

TTAF Code

FO-05274AASX20003



SC/APC-E2000/APC 9/125 SM SX L:5

Turksat Code / TTAF Confirmation Code

TKS-FOM -13

TTAF Code

FO-05274AASX20005



SC/APC-E2000/APC 9/125 SM SX L:10

Turksat Code / TTAF Confirmation Code

TKS-FOM -14

TTAF Code

FO-05274AASX20010

PATCHCORDS

FIBER OPTIK PATCHCORDS

9/125 SINGLE MODE SIMPLEX PATCHCORDS

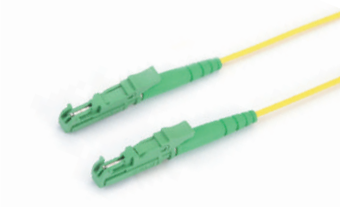
UL 94
V-0Low
Ins.
lossHigh
qualityLS
ZH

E2000/APC-E2000/APC 9/125 SM SX L:1

Turksat Code / TTAF Confirmation Code

TTAF Code

FO-05774AASX20001

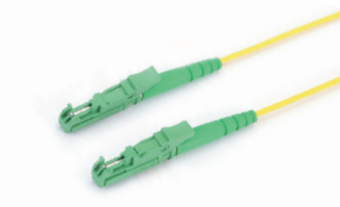


E2000/APC-E2000/APC 9/125 SM SX L:2

Turksat Code / TTAF Confirmation Code

TTAF Code

FO-05774AASX20002

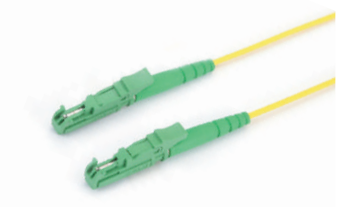


E2000/APC-E2000/APC 9/125 SM SX L:3

Turksat Code / TTAF Confirmation Code

TTAF Code

FO-05774AASX20003

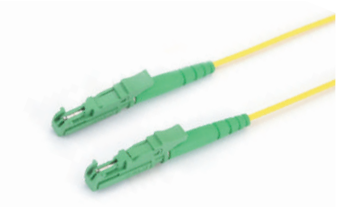


E2000/APC-E2000/APC 9/125 SM SX L:5

Turksat Code / TTAF Confirmation Code

TTAF Code

FO-05774AASX20005



E2000/APC-E2000/APC 9/125 SM SX L:10

Turksat Code / TTAF Confirmation Code

TTAF Code

FO-05774AASX20010

PATCHCORDS

FIBER OPTIK PATCHCORDS

9/125 SINGLE MODE SIMPLEX PATCHCORDS

UL 94
V-0Low
Ins.
lossHigh
qualityLS
ZH

SC/APC-LC/APC 9/125 SM SX L:0,25

Turksat Code / TTAF Confirmation Code

TTAF Code

FO-05244AASX2000,25



SC/APC-LC/APC 9/125 SM SX L:0,50

Turksat Code / TTAF Confirmation Code

TTAF Code

FO-05244AASX2000,50



SC/APC-LC/APC 9/125 SM SX L:1

Turksat Code / TTAF Confirmation Code

TTAF Code

TKS-FOM-42

FO-05244AASX20001

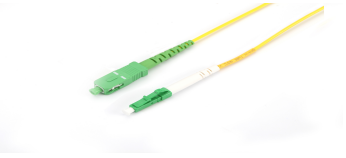


SC/APC-LC/APC 9/125 SM SX L:2

Turksat Code / TTAF Confirmation Code

TTAF Code

FO-05244AASX20002



SC/APC-LC/APC 9/125 SM SX L:3

Turksat Code / TTAF Confirmation Code

TTAF Code

TKS-FOM-44

FO-05244AASX20003



SC/APC-LC/APC 9/125 SM SX L:5

Turksat Code / TTAF Confirmation Code

TTAF Code

FO-05244AASX20005



SC/APC-LC/APC 9/125 SM SX L:10

Turksat Code / TTAF Confirmation Code

TTAF Code

FO-05244AASX20010

PATCHCORDS

FIBER OPTIK PATCHCORDS

9/125 SINGLE MODE SIMPLEX PATCHCORDS

UL 94
V-0Low
Ins.
lossHigh
qualityLS
ZH

LC/APC-LC/APC 9/125 SM SX L:0,25

Turksat Code / TTAF Confirmation Code

TTAF Code

FO-05444AASX2000,25



LC/APC-LC/APC 9/125 SM SX L:0,50

Turksat Code / TTAF Confirmation Code

TTAF Code

FO-05444AASX2000,50



LC/APC-LC/APC 9/125 SM SX L:1

Turksat Code / TTAF Confirmation Code

TTAF Code

TKS-FOM-43

FO-05444AASX20001

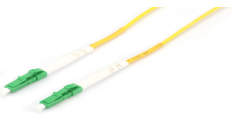


LC/APC-LC/APC 9/125 SM SX L:2

Turksat Code / TTAF Confirmation Code

TTAF Code

FO-05444AASX20002



LC/APC-LC/APC 9/125 SM SX L:3

Turksat Code / TTAF Confirmation Code

TTAF Code

TKS-FOM-45

FO-05444AASX20003



LC/APC-LC/APC 9/125 SM SX L:5

Turksat Code / TTAF Confirmation Code

TTAF Code

FO-05444AASX20005



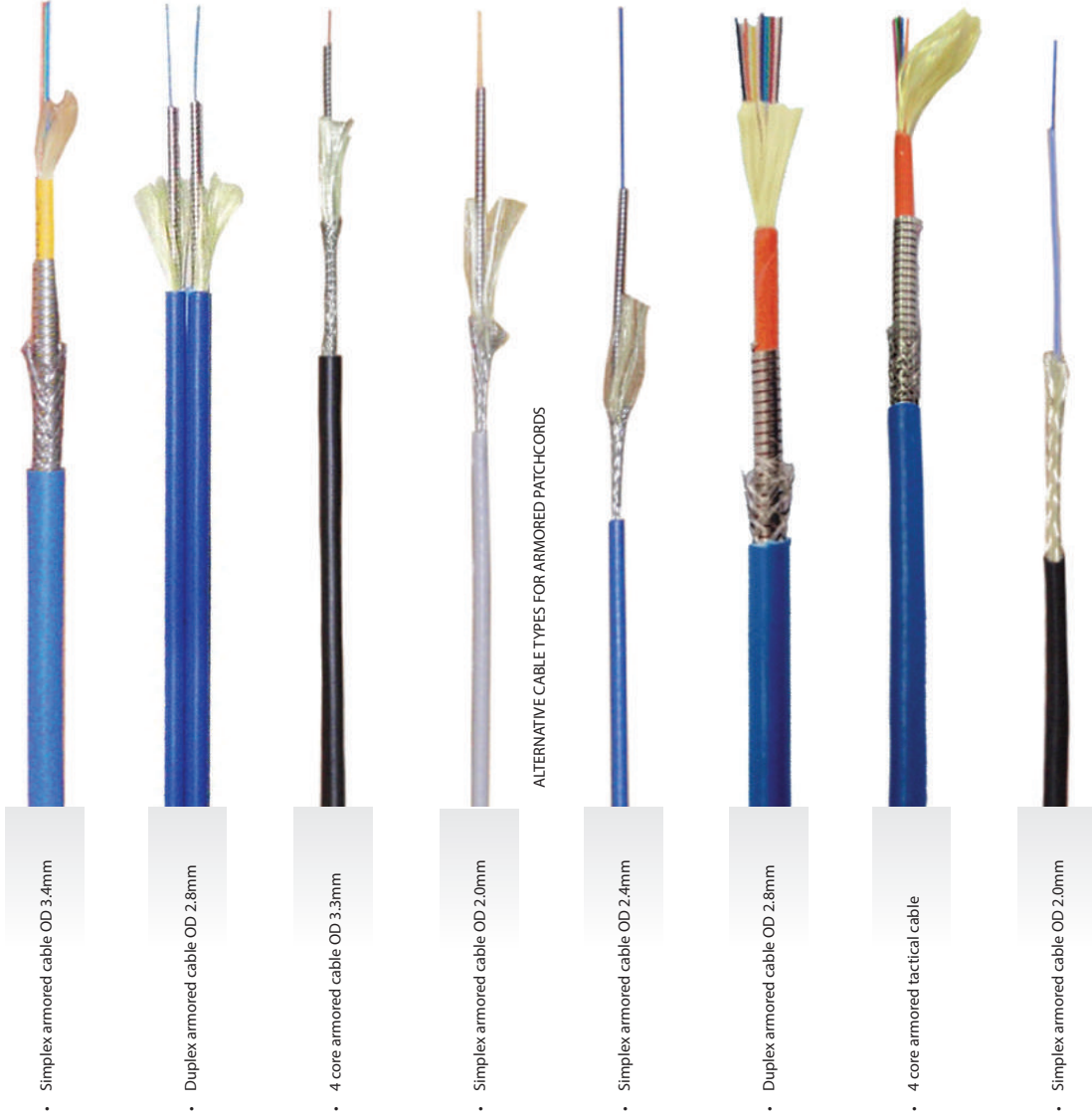
LC/APC-LC/APC 9/125 SM SX L:10

Turksat Code / TTAF Confirmation Code

TTAF Code

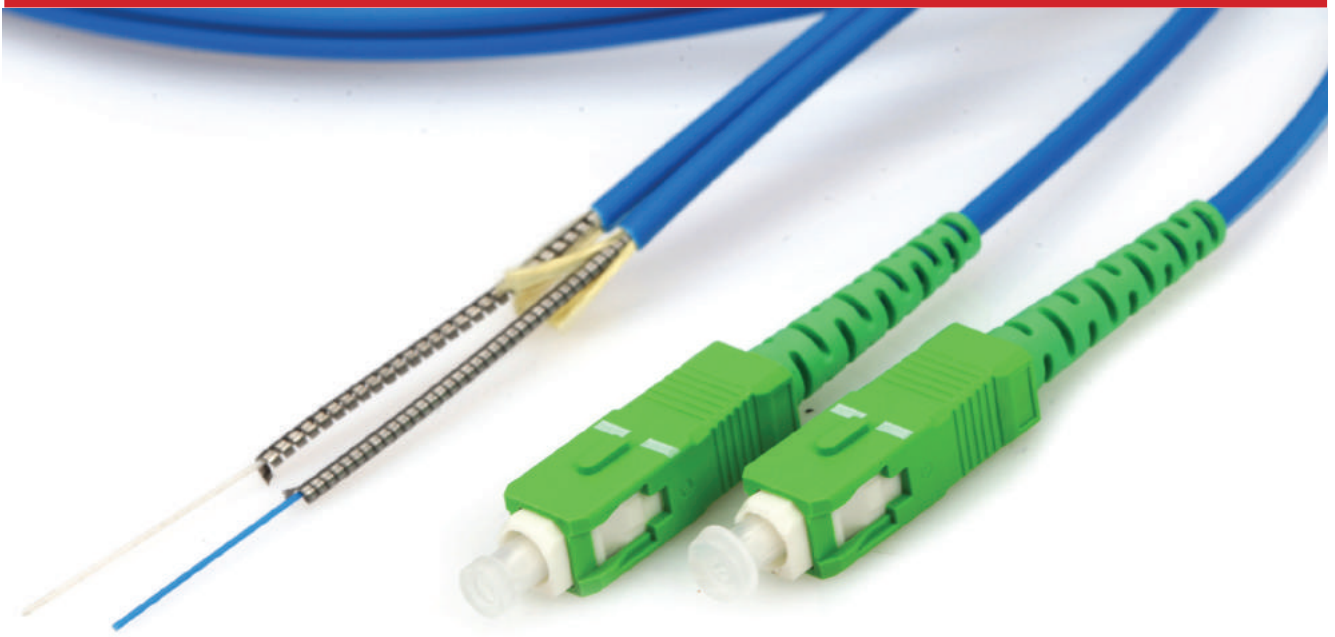
FO-05444AASX20010

PATCHCORDS

FIBER OPTIK SPECIAL PATCHCORDS
ARMORED & FAN-OUT PATCHCORDS

TYPE	SINGLE MODE	SINGLE MODE	MULTI MODE
Ek Kaybı	0.2 dB	0.2 dB	0.2 dB
Geri Dönüş Kaybı	55 dB	75 dB	45 dB
Depolama Sıcaklığı	40 C to +90 C	-40 C to +90 C	
Çalışma Sıcaklığı	40 C to +85 C	-40 C to +85 C	
IL		0.1 dB	
Servis Ömrü		1000 takma/çıkarma	

PATCHCORDS



SC/APC-SC/APC 9/125 SM SX L:3 (ARMORED)

Turksat Code / TTAF Confirmation Code

TKS-FOM-27

TTAF Code

FO-05224AASX30003Z

SCA/APC 9/125 SM SX L:3 PIGTAIL (ARMORED)

Turksat Code / TTAF Confirmation Code

TKS-FOM-28

TTAF Code

FO-0424AASX30003Z

Application

- Gigabit Ethernet
- Telecommunication Networks
- Active Device Termination
- Video
- Industrial
- Multimedia
- Military
- Premise Installations

Type	Optical Performance	
	Single Mode (APC polish)	Multimode (PC /Flat Polish)
Insertion Loss	≤ 0.2 db	≤ 0.2 db
Return Loss	PC > 45 dB UPC > 55 dB APC > 65 dB	UPC > 55 dB
Repeatability	≤ 0.1 db	≤ 0.1 db
Durability	≤ 0.2 dB	- ≤ 0.2 dB
Interchangeability	≤ 0.1 dB	≤ 0.1 dB
Tensile Strenght	> 15 kg.	> 15 kg.
Operating Temperature	-40 °C to 85 °C	-40 °C to 85 °C
Storage Temperature	-40 °C to 85 °C	-40 °C to 85 °C

PIGTAILS

FIBER OPTIK PIGTAILS

9/125 OPTICAL FIBER PIGTAILS

PIGTAILS

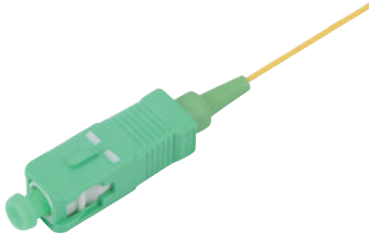
CONFORMANCE

IEC 61300-3-4

IEC 61300-3-4

IEC 61300-3-34

IEC 61300-3-6



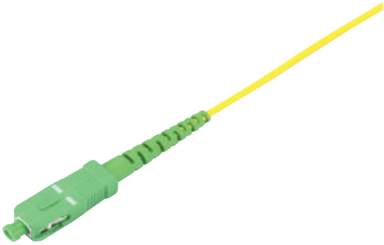
SC/APC 9/125 SM SX L:1,5 FO PIGTAIL

Turksat Code / TTAF Confirmation Code

TKS-FOM-32

TTAF Code

FO-0424ASX091,5



SC/APC 9/125 SM SX L:3 FO PIGTAIL

Turksat Code / TTAF Confirmation Code

TKS-FOM-15

TTAF Code

FO-0424ASX0,9003



fiberoptic@ttaf.com.tr



ttaf electronic

FACTORY - HEAD OFFICE
Kavaklı Mah İstanbul Cad. No:21 Beylikdüzü, İstanbul / TÜRKİYE

Tel: +90 212 855 82 20 (10 lines)
Fax: +90 212 855 82 21